

TECHNICAL MANUAL

**AVIATION UNIT AND INTERMEDIATE
MAINTENANCE**

**REPAIR PARTS AND SPECIAL TOOLS LIST
(INCLUDING DEPOT MAINTENANCE REPAIR
PARTS AND SPECIAL TOOLS)**

FOR

**ADVANCED FLIGHT CONTROL SYSTEM (AFCS)
LINE TEST SET**

NSN 4920-01-121-0603

This copy is a reprint of the Basic
Technical Manual.

HEADQUARTERS, DEPARTMENT OF THE ARMY

3 JUNE 1987

TECHNICAL MANUAL

No. 55-4920-429-23P

HEADQUARTERS
DEPARTMENT OF THE ARMY
WASHINGTON, D.C., 3 June 1987

AVIATION UNIT AND INTERMEDIATE MAINTENANCE
REPAIR PARTS AND SPECIAL TOOLS LIST
(INCLUDING DEPOT MAINTENANCE REPAIR
PARTS AND SPECIAL TOOLS)

FOR

ADVANCED FLIGHT CONTROL SYSTEMS (AFCS)
LINE TEST SET
NSN 4920-01-121-0603

REPORTING ERRORS AND RECOMMENDING IMPROVEMENTS

You can help improve this manual. If you find any mistake or if you find a way to improve the procedures, please let us know. Mail your letter, DA Form 2028 (Recommended Changes to Publications and Blank Forms), or DA Form 2028-2 located in the back of this manual direct to: Commander, US Army Aviation Systems Command, ATTN: AMSAV-MPSD, 4300 Goodfellow Blvd., St. Louis, Missouri 63120-1798. A reply will be furnished directly to you.

TABLE OF CONTENTS

		Listing Page	Illus Figure
Section I.	INTRODUCTION	1	
II.	REPAIR PARTS LIST	1-1	
	GROUP 01 LINE TEST SET		
	Advanced Flight Control System	1-1	1
	GROUP 02 CABLE ASSEMBLIES		
	Cable Assemblies	2-1	2
	GROUP 03		
	Panel Assembly	3-1	3
	GROUP 04 BULK MATERIAL	Bulk-1	
III.	SPECIAL TOOLS LIST		
	Not applicable	N/A	N/A
IV.	NATIONAL STOCK NUMBER AND PART NUMBER INDEX		
	National Stock Number and Part Number Index	I-1	

SECTION I. INTRODUCTION

1. Scope.

This RPSTL lists and authorizes spares and repair parts; special tools; special test, measurement, and diagnostic equipment (TMDE); and other special support equipment required for performance of Aviation Unit and Aviation Intermediate maintenance of the Advanced Flight Control System (AFCS) Line Test Set. It authorizes the requisitioning, issue, and disposition of spares, repair parts and special tools as indicated by the source, maintenance and recoverability (SMR) codes.

2. General.

In addition to Section I, Introduction, this Repair Parts and Special Tools List is divided into the following sections:

a. Section II. Repair Parts List. A list of spares and repair parts authorized by this RPSTL for use in the performance of maintenance. The list also includes parts which must be removed for replacement of the authorized parts. Parts lists are composed of functional groups in ascending alphanumeric sequence, with the parts in each group listed in ascending figure and item number sequence. Bulk materials are listed in item name sequence. Repair parts kits are listed separately in their own functional group within Section II. Repair parts for repairable special tools are also listed in this section. Items listed are shown on the associated illustration(s)/figure(s).

b. Section III. Special Tools List. A list of special tools, special TMDE, and other special support equipment authorized by this RPSTL (as indicated by Basis of Issue (BOI) information in DESCRIPTION AND USABLE ON CODE column) for the performance of maintenance. (Not Applicable)

c. Section IV. National Stock Number and Part Number Index. A list, in National Item Identification number (NIN) sequence, of all National stock numbered items appearing in the listing, followed by a list in alphanumeric sequence of all part numbers appearing in the listings. National stock numbers and part numbers are cross-referenced to each illustration figure and item number appearance.

CODE

Explanation

MO-	(Made at org/AVUM Level)
MF-	(Made at DS/AVUM Level)
MH-	(Made at GS Level)
ML-	(Made at Specialized Repair Act (SRA))
MD-	(Made at Depot)

Items with these codes are not to be requested/requisitioned individually. They must be made from bulk material which is identified by the part number in the DESCRIPTION AND USABLE ON CODE (UOC) column and listed in the Bulk Material group of the repair parts list in this RPSTL. If the item is authorized to you by the 3d position code of the SMR code, but the source code indicates it is made at a higher level, order the item from the higher level of maintenance.

AO-	(Assembled by org/AVUM Level)
AF-	(Assembled by DS/AVIM Level)
H-	(Assembled by GS Category)
AL-	(Assembled by SRA)
AD-	(Assembled by Depot)

Items with these codes are not to be requested/requisitioned individually. The parts that make up these assembled item must be requisitioned or fabricated and assembled at the level of maintenance indicated by the source code. If the 3d position code of the SMR code authorizes you to replace the item, but the source code indicates the item is assembled at a higher level, order the item from the higher level of maintenance.

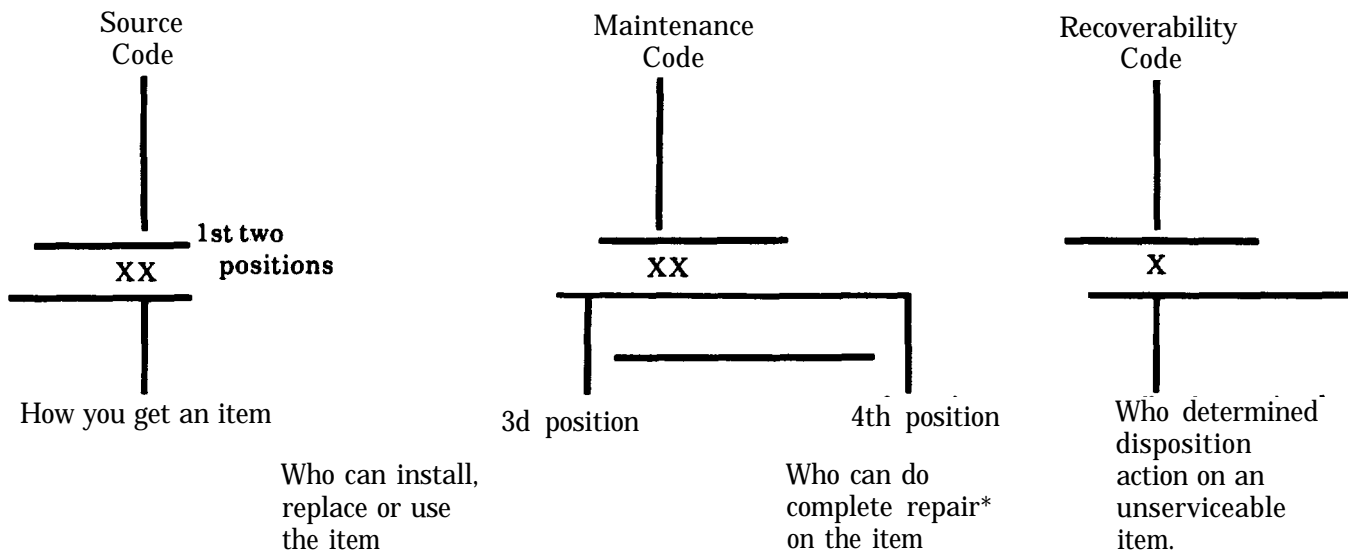
- XA- Do not requisition an "XA"-coded item. Order its next higher assembly. (Also, refer to the NOTE below.)
- XB- If an "XB" item is not available from salvage, order it using the FSCM and part number given.
- XC- Installation drawing, diagram, instruction sheet, field service drawing, that is identified by manufacturer's part number.
- XD- Item is not stocked. Order an "XD"-coded item through normal supply channels using the FSCM and part number given, if no NSN is available.

NOTE: Cannibalization or controlled exchange, when authorized, may be used as a source of supply for items with the above source codes, except for those source coded "XA" or those aircraft support items restricted by requirements of AR 700-42.

3. Explanation of Columns (Sections II and III).

a. *ITEM NO. (Column (1)).* Indicates the number used to identify items called out in the illustration.

b. *SMR CODE (Column (2)).* The Source, Maintenance, and Recoverability (SMR) code is a 5-position code containing supply/requisitioning information, maintenance category authorization criteria, and disposition instruction, as shown in the following breakout:



*Complete Repair: Maintenance capacity, capability, and authority to perform all corrective maintenance tasks of the "Repair: function in a use/user environment" in order to restore serviceability to a failed item.

(1) **Source Code.** The source code tells you how to get an item needed for maintenance, repair, or overhaul of an end item/equipment. Explanations of source codes follows:

Code	Explanation
PA PB PC** PD PE PF PG	<p>Stocked items; use the applicable NSN to request/requisition items these source codes. They are authorized to the category indicated by the-code entered in the 3d position of the SMR code.</p> <p>**NOTE: Items coded PC are subject to deterioration.</p>
KD PF KB	<p>Items with these codes are not to be requested/requisitioned individually. They are part of a kit which is authorized to the maintenance category indicated in the 3d position of the SMR code. The complete kit must be requisitioned and applied.</p>

(2) **Maintenance Code.** Maintenance codes tells you the level(s) of maintenance authorized to USE and REPAIR support items. The maintenance codes are entered in the third and fourth positions of the SMR Code as follows:

(a) The maintenance code entered in the third position tells you the lowest maintenance level authorized to remove, replace, and use an item. The maintenance code entered in the third position will indicate authorization to one of the following levels of maintenance.

Code	Application/Explanation
C	-Crew or operator maintenance done within organizational or aviation unit maintenance.
O	-Organizational or aviation unit category can remove, replace, and use the item.
F	-Direct support or aviation intermediate level can remove, replace, and use the item.
H	-General support level can remove, replace, and use the item.
L	-Specialized repair activity can remove, replace, and use the item.
D	-Depot level can remove, replace, and use the item.

(b) The maintenance code entered in the fourth position tells whether or not the item is to be repaired and identifies the lowest maintenance level with the capability to do complete repair (i.e., perform all authorized repair functions). (NOTE: Some limited repair may be done on the item at a lower level of maintenance, if authorized by the Maintenance Allocation Chart (MAC) and SMR codes.) This position will contain one of the following maintenance codes.

CODE	Application/Explanation
O	-Organizational or (aviation unit) is the lowest level that can do complete repair of the item.
F	-Direct support or aviation intermediate is the lowest level that can do complete repair of the item.
H	-General support is the lowest level that can do complete repair of the item.
L	-Specialized repair activity (designate the specialized repair activity) is the lowest level that can do complete repair of the item.
D	-Depot is the lowest level that can do complete repair of the item.
Z	-Nonreparable. No repair is authorized.
B	-No repair is authorized. (No parts or special tools are authorized for the maintenance of a "B" coded item). However, the item may be reconditioned by adjusting, lubricating, etc., at the user level.

(3) **Recoverability Code.** Recoverability codes are assigned to items to indicate the disposition action on unserviceable items. The recoverability code is entered in the fifth position of the SMR Code as follows:

Recoverability Codes	Application/Explanation
Z	-Nonreparable item. When unserviceable, condemn and dispose of the item at the level of maintenance shown in 3d position of SMR Code.
O	-Reparable item. When uneconomically repairable, condemn and dispose of the item at organizational or aviation unit level.
F	-Reparable item. When uneconomically repairable, condemn and dispose of the item at the direct support or aviation intermediate level.
H	-Reparable item. When uneconomically repairable, condemn and dispose of the item at the general support level.
D	-Reparable item. When beyond lower level repair capability, return to depot. Condemnation and disposal of item not authorized below depot level.
L	-Reparable item. Condemnation and disposal not authorized below specialized repair activity (SRA).
A	-Item requires special handling or condemnation procedures because of specific reasons (e.g., precious metal content, high dollar value, critical material, or hazardous material). Refer to appropriate manuals/directives for specific instructions.

c. FSCM (Column 3). The Federal Supply Code for Manufacturer (FSCM) is a 5-digit numeric code which is used to identify the manufacturer, distributor, or Government agency, etc., that supplies the item.

d. PART NUMBER (Column 4). Indicates the primary number used by the manufacturer (individual, company, firm, corporation, or Government activity), which controls the design and characteristics of the item by means of its engineering drawings, specifications standards, and inspection requirements to identify an item or range of items.

NOTE: When you use a NSN to requisition an item, the item you receive may have a different part number from the part ordered.

e. DESCRIPTION AND USABLE ON CODE (UOC) (Column 5). This column includes the following information:

(1) The Federal item name and, when required, a minimum description to identify the item.

(2) The physical security classification of the item is indicated by the parenthetical entry (insert applicable physical security classification abbreviation, e.g., Phy Set C1 (c) -Confidential, Phy Set C1 (S) -Secret, Phy Set C1 (T) -Top Secret).

(3) Items that are included in kits and sets are listed below the name of the kit or set.

(4) Spare/repair parts that make up an assembled item are listed immediately following the assembled item line entry.

(6) Part numbers for bulk materials are referenced in this column in the line item entry for the item to be manufactured/fabricated.

(6) When the item is not used with all serial numbers of the same model, the effective serial numbers are shown on the last line(s) of the description (before UOC).

(7) The usable on code, when applicable (see paragraph 5, Special information).

(8) In the Special Tools List section, the basis of issue (BOI) appears as the last line(s) in the entry for each special tool, special TMDE, and other special support equipment. When density of issue, the total authorization is increased proportionately.

(9) The statement "END OF FIGURE" appears just below the last item description in Column 5 for a given figure in both Section II and Section III.

f. QTY (Column 6). The QTY (quantity per figure column) indicates the quantity of the item used in the breakdown shown on the illustration figure, which is prepared for a functional group, subfunctional group, or an assembly. A "V" appearing in this column in lieu of a quantity indicates that the quantity is variable and the quantity may vary from application to application.

4. Explanation of Columns (Sect. IV).

a. NATIONAL STOCK NUMBER (NSN) INDEX.

(1) *STOCK NUMBER Column.* This column lists the NSN by National item identification number (NIIN) sequence. The NIIN consists of the last nine digits of the NSN (i.e., 5305-01, NSN
NIIN 674-1467). When using this column to locate an item, ignore the first 4 digits of the NSN. However, the complete NSN should be used when ordering items by stock number.

(2) **FIG. column.** This column lists the number of the figure where the item is identified/located. The figures are in numerical order in Section II and Section III.

(3) **ITEM column.** The item number identifies the item associated with the figure listed in the adjacent FIG. column. This item is also identified by the NSN listed on the same line.

b. PART NUMBER INDEX. Part numbers in this index are listed by part number in ascending alphanumeric sequence (i.e., vertical arrangement of letter and number combination which places the first letter or digit of each group in order A through Z, followed by the numbers 0 through 9 and each following letter or digit in like order).

(1) **FSCM column.** The Federal Supply Code for Manufacturer (FSCM) is a 5-digit numeric code used to identify the manufacturer, distributor, or Government agency, etc., that supplies the item.

(2) **PART NUMBER column.** Indicate the primary number used by the manufacturer (individual, firm, corporation, or Government activity), which controls the design and characteristics of the item by means of its engineering drawings, specifications standards, and inspection requirements to identify an item or range of items.

(3) **STOCK NUMBER column.** This column lists the NSN for the associated part number and manufacturer identified in the PART NUMBER and FSCM columns to the left.

(4) **FIG. column.** This column lists the number of the figure where the item is identified/locate in Section II and III.

(6) **ITEM column.** The item number is that number assigned to the item as it appears in the figure referenced in the adjacent figure number column.

5. **Special Information.** Use the following subparagraphs as applicable:

a. USABLE ON CODE. The usable on code appears in the lower left corner of the Description column heading. Usable on codes are shown as "UOC:." in the Description Column (justified left) on the first line applicable item description/nomenclature. Uncoded items are applicable to all models. Identification of the usable on codes used in the RPSTL are:

Code	Used On	
PAA	Model M114	
PAB	Model M114A	(These codes and model numbers are examples only)
PAC	Model M114B	

b. INDEX NUMBERS. Items which leave the word BULK in the figure column will have an index number shown in the item number column. This index number is a cross-reference between the National Stock Number/Part Number Index and the bulk material list in Section II.

c. ASSOCIATED PUBLICATIONS. The publication(s) listed below pertain to and its components:

<u>Publication</u>	<u>Short Title</u>
TM 55-4920-429-13	Operator, AVUM and AVIM Maintenance Manual

NOTE: Associated publications shall not be listed her in combined narrative and RPSTL manuals.

6. How to Locate Repair Parts.

a. When National Stock Number or Part Number is Not Known.

(1) **First.** Using the table of contents, determine the assembly group or subassembly group to which the item belongs. This is necessary since figures are prepared for assembly groups and subassembly groups, and listings are divided into the same group.

(2) **Second.** Find the figure covering the assembly group or subassembly group to which the item belongs.

(3) **Third.** Identify the item on the figure and note the item number.

(4) **Fourth.** Refer to the Repair Parts Lists for the figure to find the part number for the item number noted on the figure.

(5) **Fifth.** Refer to the Part Number Index to find the NSN, if assigned.

b. When National Stock Number or Part Number is Known:

(1) **First.** Using the Index of National Stock Numbers and Part Numbers, find the pertinent National Stock Number or Part Number. The NSN index is in National Item Identification Number (NIIN) sequencer (see 4a (1)). The part numbers in the Part Number index are listed in ascending alphanumeric sequence (see 4b). Both indexes cross-reference you to the illustration figure and item number of the item you are looking for.

(2) **Second.** After finding the figure and item number, verify that the item is the one you're looking for, then locate the item number in the repair parts list for the figure.

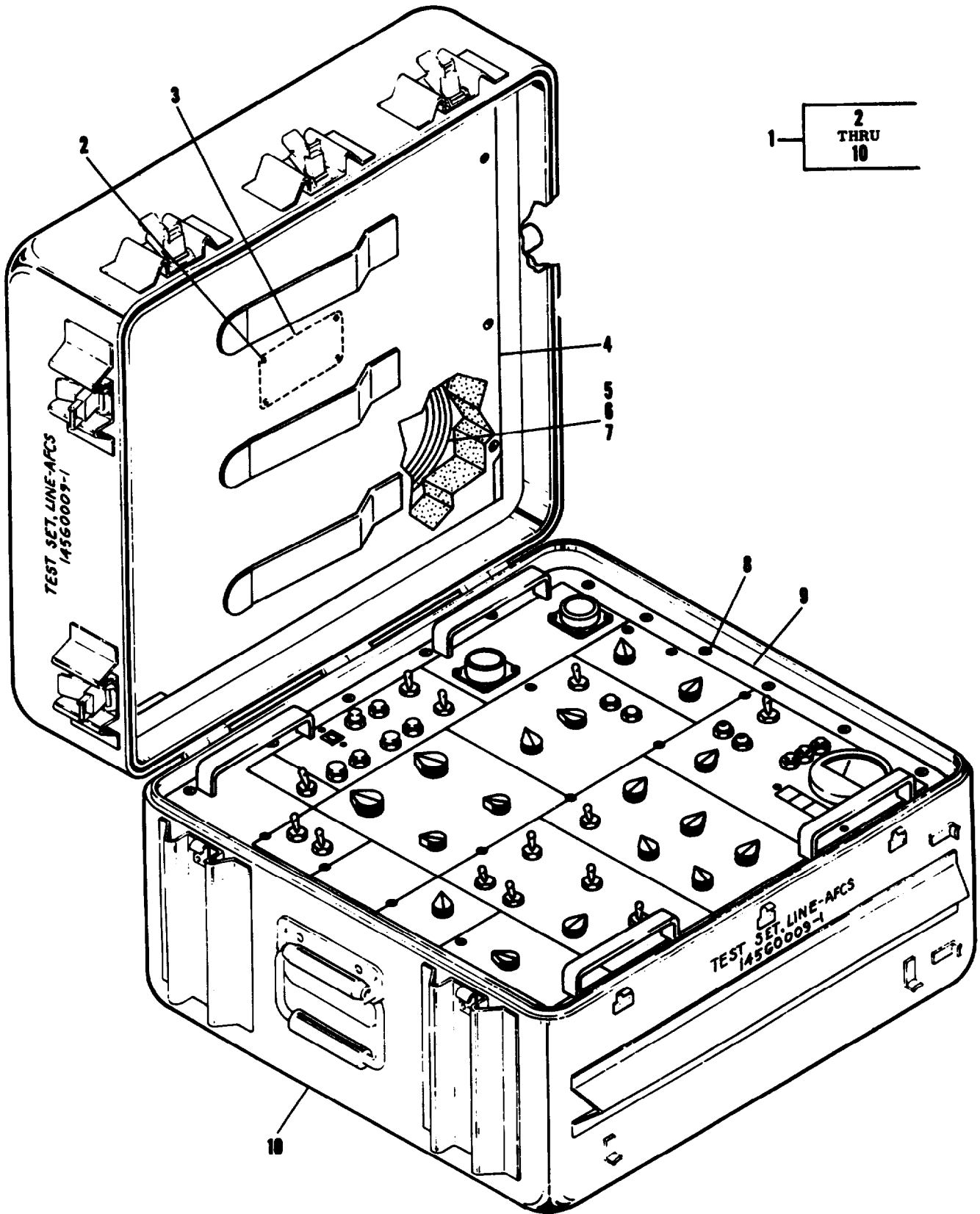


Figure 1. AFCS Line Test Set

SECTION II			TM55-4920-429-23P			
(1)	(2)	(3)	(4)	(5)	(6)	
ITEM	SMR		PART			
NO	CODE	FSCM	NUMBER	DESCRIPTION AND USABLE ON CODES(UOC)	QTY	
GROUP 01. AFCS LINE TEST SET						
FIGURE 1. TEST SET, AFCS LINE						
1	PBODD	77272	145G0009-1	TEST SET, AFCS LINE	1	
2	PAFZZ	80205	NAS1635-00-2	.SCREW,MACHINE	4	
3	XDFZZ	77272	VS25113-4	.PLATE, IDENT	1	
4	MFFZZ	94580	10066999-101	.INSERT,FOAM PACKING	2	
5	AFFZZ	77272	145G5211-1	.CABLE ASSY J1 Y1 ,SEE FIG 2 FOR BKDN	1	
6	AFFZZ	77272	145G5212-1	.CABLE ASSY ILCA W2 ,SEE FIG 2 FOR BKDN	1	
7	AFFZZ	77272	145G3213-1	.CABLE ASSY J3 W3 ,SEE FIG 2 FOR BKDN	1	
8	PAFZZ	80205	NAS1635-3-10	.SCREW,MACHINE	12	
9	XDFDD	77272	145G5210-1	.PANEL ASSY TEST SET SEE FIG 3 FOR BKDN	1	
10	XDFZZ	77272	414G5206-1	.CASE STD-MODIFIED	1	

END OF FIGURE

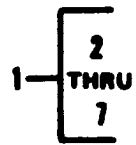
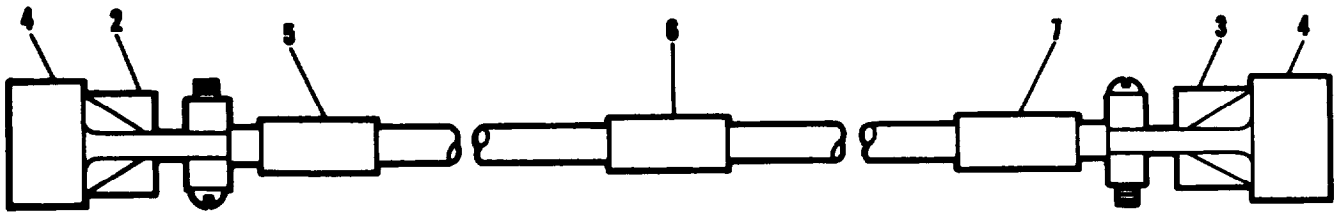


Figure 2. Cable Assemblies

SECTION II			TM55-4920-429-23P			
(1)	(2)	(3)	(4)	(5)	(6)	
ITEM	SMR	FSCM	PART			
NO	CODE		NUMBER	DESCRIPTION AND USABLE ON CODES(UOC)	QTY	
GROUP 02. CABLE ASSEMBLIES						
FIGURE 2. CABLE ASSY						
1	AFFZZ	77272	145G5211-1	CABLE ASSY J1 W1	1	
1	AFFZZ	77272	145G5212-1	CABLE ASSY ILCA W2	1	
1	AFFZZ	77272	145G5213-1	CABLE ASSY J3 W3	1	
2	PAFZZ	96906	MS3476L24-61S	.CONNECTOR,PLUG,ELEC (W1P1) (U/W 145G5211-11	1	
2	PAFZZ	81349	M83723/86A1415N	.CONNECTOR (W2P1) (U/W 145G5212-1)	1	
2	PAFZZ	96906	MS3476L24-61SX	.CONNECTOR,PLUG,ELEC (W3P1) (U/W 145G5213-1)	1	
3	PAFZZ	96906	MS3471L24-61P	.CONNECTOR,RECEPTACL (W1P2) (U/W 145G5211-1)	1	
3	PAFZZ	81349	M83723/85A1415N	.CONNECTOR,RECEPTACL (W2P2) (U/W 145G5212-1)	1	
3	PAFZZ	96906	MS3471L24-61PX	-CONNECTOR (W3P2) (U/W 145G5213-1)	1	
4	PAFZZ	81349	M85049/52-1-24W	.CLAMP,CABLE,ELECTRI (U/W 145G5211- 1 AND 145G5213-1)	2	
4	PAFZZ	81349	M85049/52-1-14W	.CLAMP,CABLE,ELECTRI (U/W 145G5212- 1)	2	
5	XCFZZ	77272	145G5202-1	.TAG,IDENTIFICATION	1	
5	XCFZZ	77272	145G5202-4	.TAG,IDENTIFICATION	1	
5	XCFZZ	77272	145G5202-7	.TAG,IDENTIFICATION	1	
6	XCFZZ	77272	145G5202-2	.TAG,IDENTIFICATION	1	
6	XCFZZ	77272	145G5202-5	.TAG,IDENTIFICATION	1	
6	XCFZZ	77272	145G5202-8	.TAG,IDENTIFICATION	1	
7	XCFZZ	77272	145G5202-3	.TAG,IDENTIFICATION	1	
7	XCFZZ	77272	145G5202-6	.TAG,IDENTIFICATION	1	
7	XCFZZ	77272	145G5202-9	.TAG,IDENTIFICATION	1	

END OF FIGURE

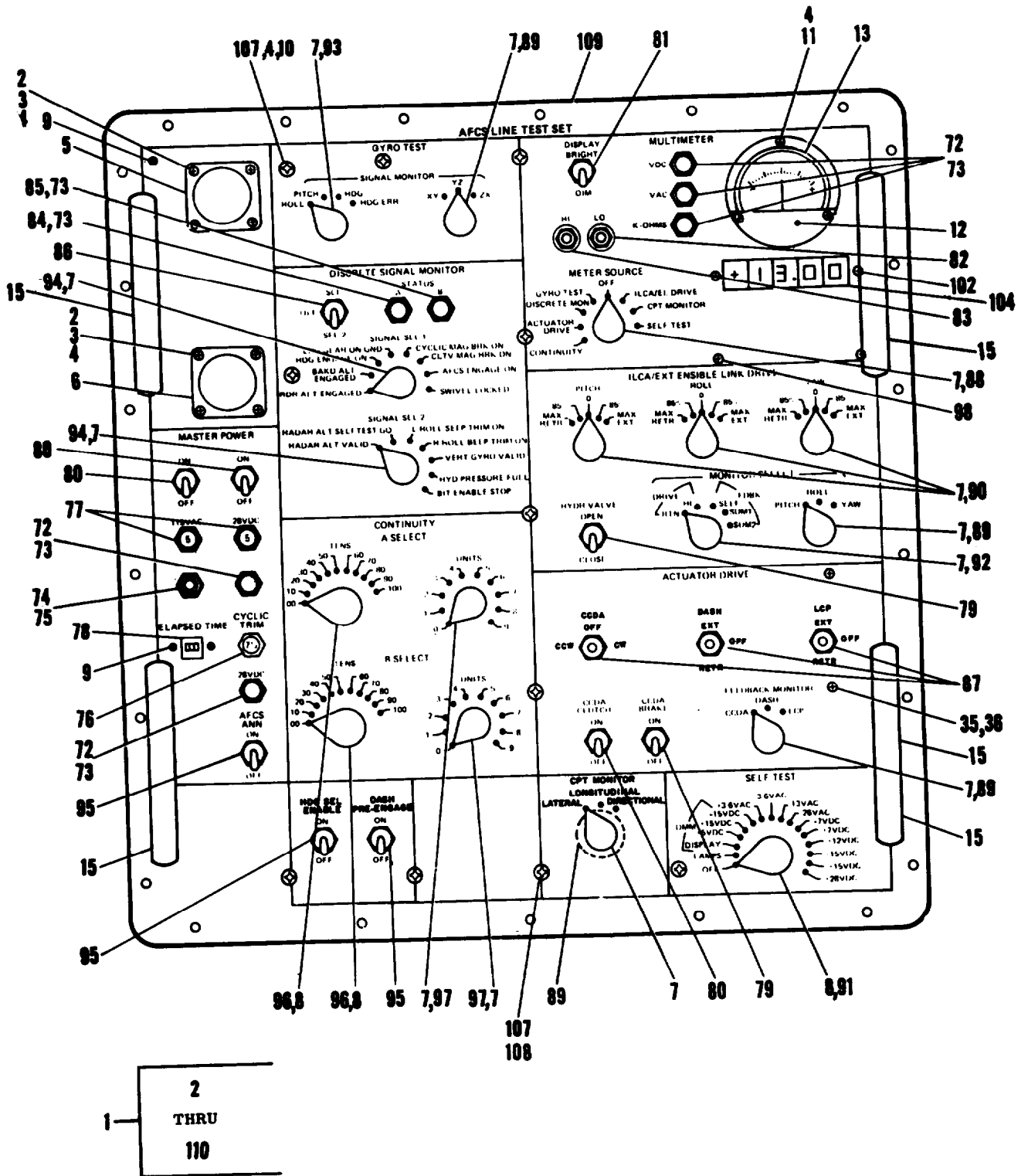


Figure 3. Panel Assy (Sheet 1 of 4)

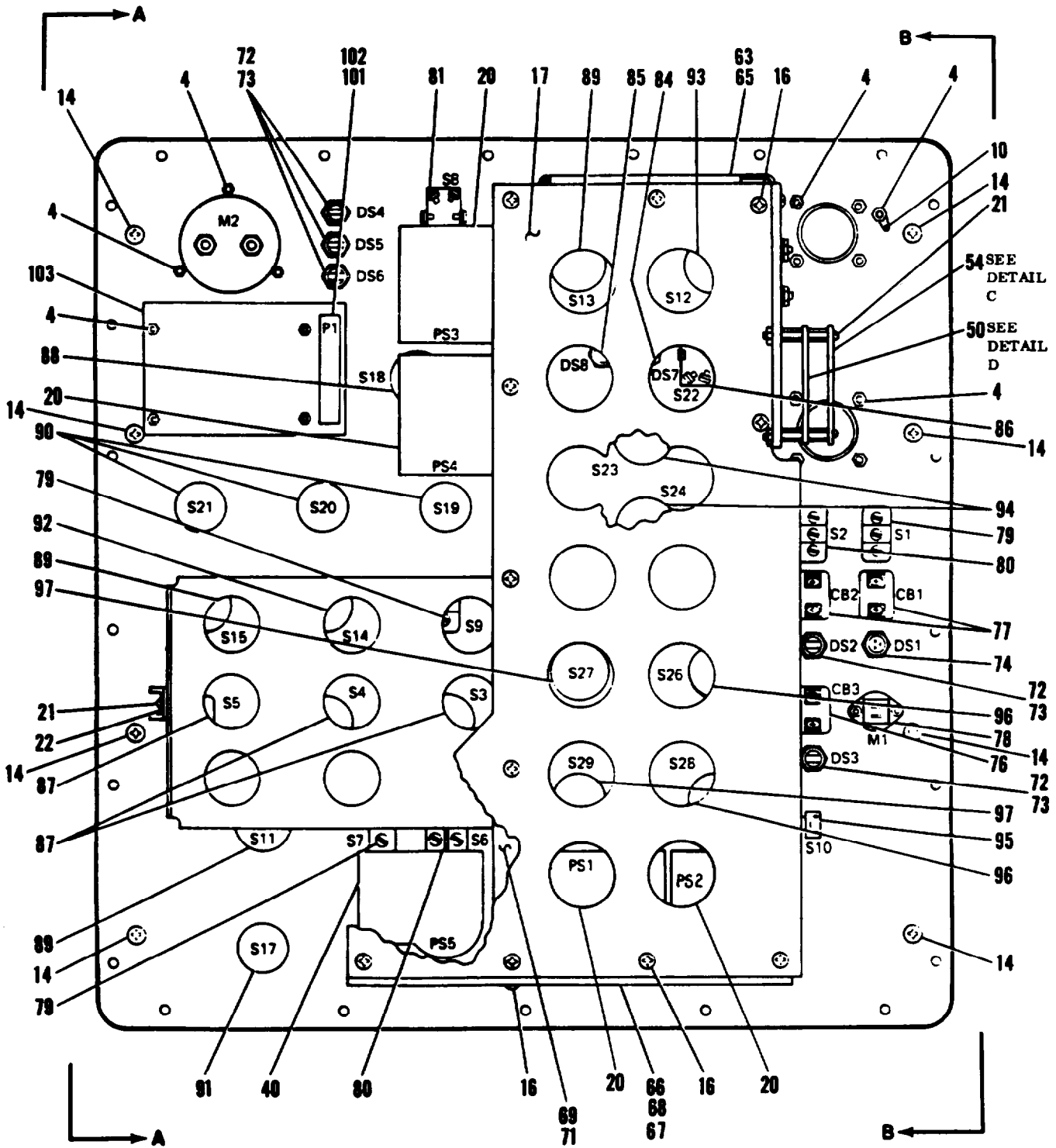


Figure 3. Panel Assy (Sheet 2 of 4)

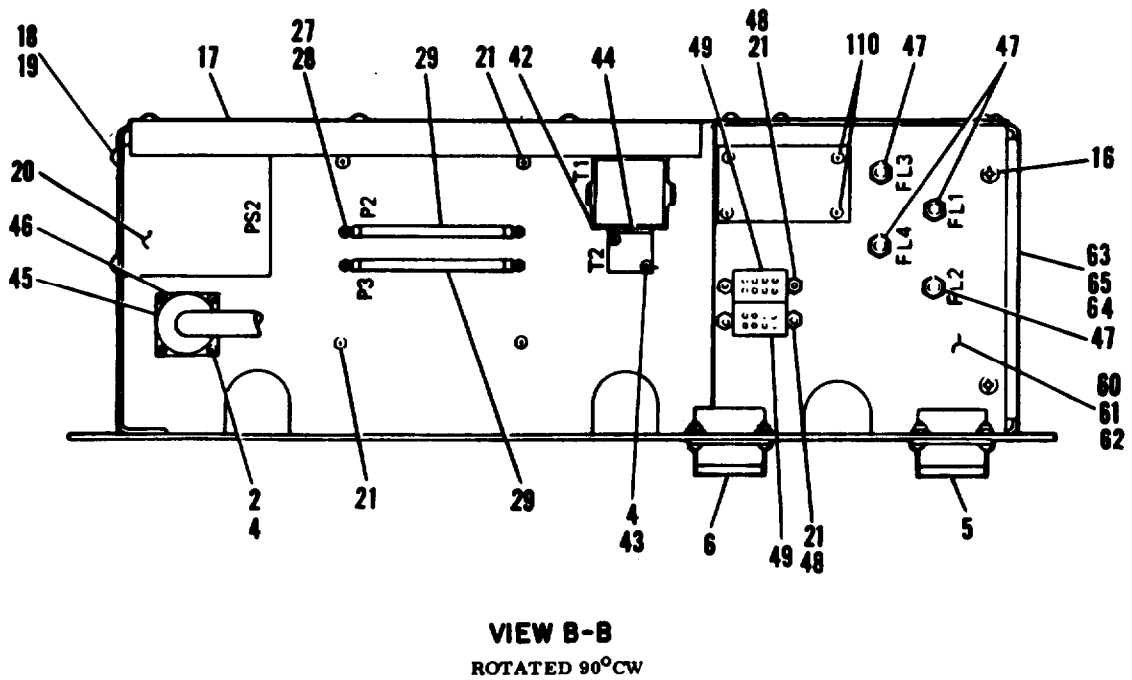
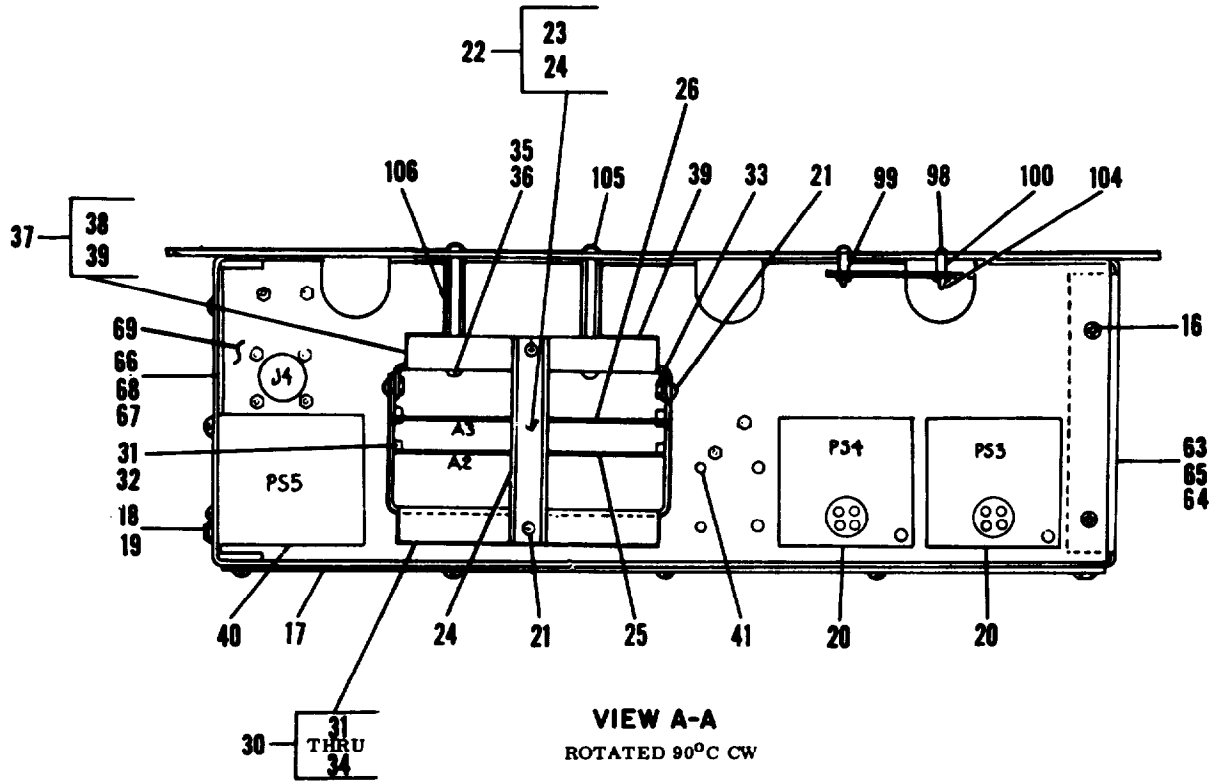
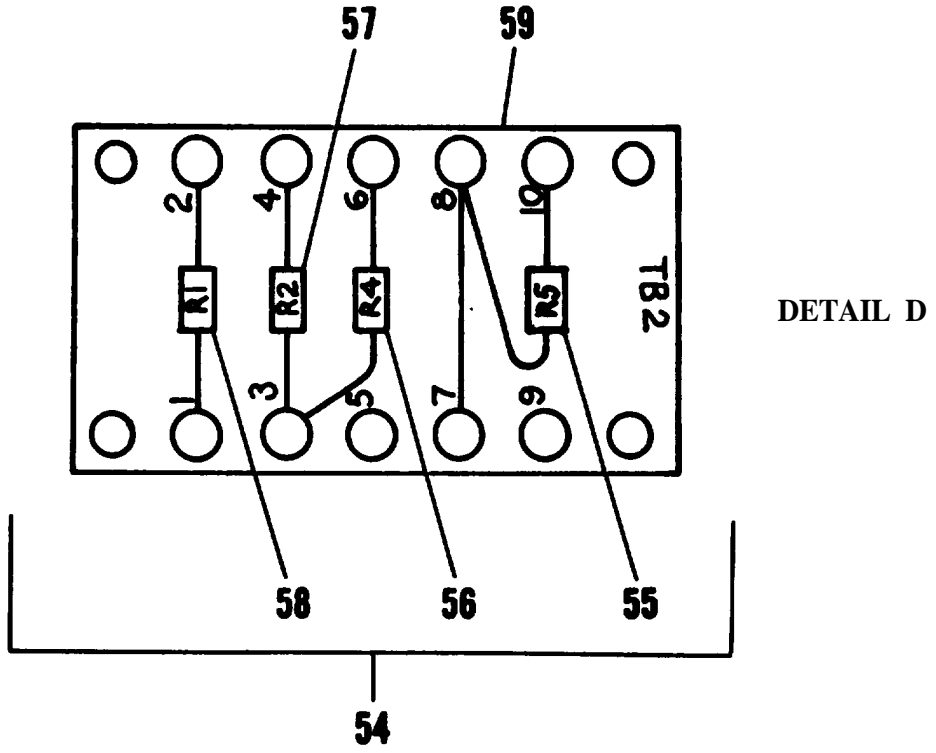
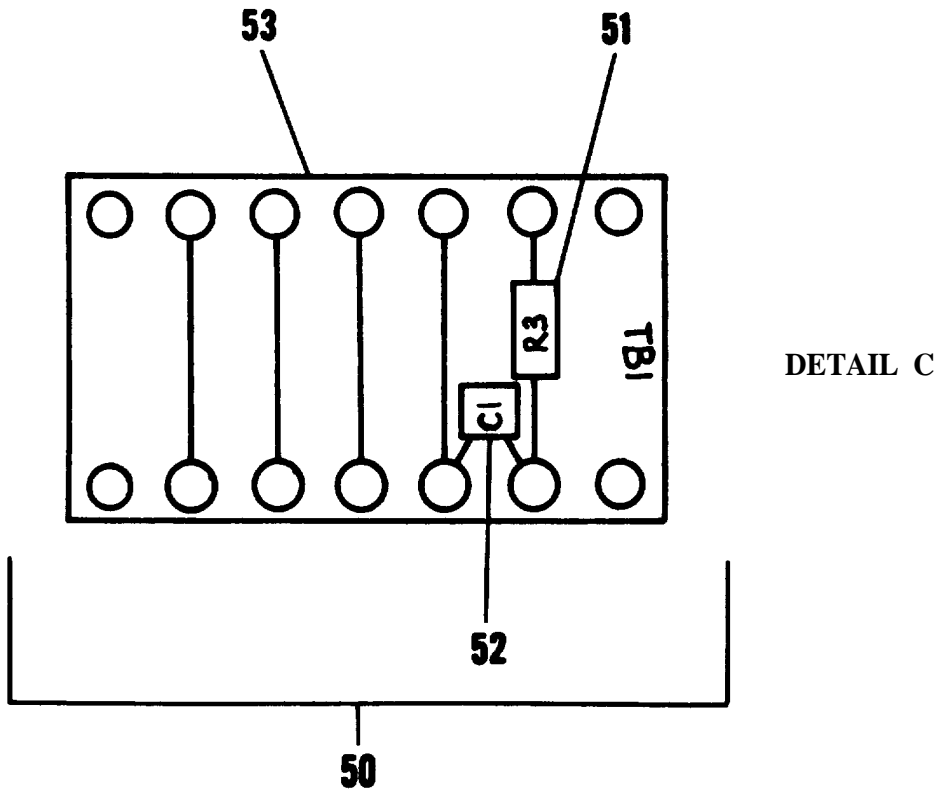


Figure 3. Panel Assy (Sheet 3 of 4)



DETAIL D



DETAIL C

Figure 3. Panel Assy (Sheet 4 of 4)

SECTION II			TM55-4920-429-23P			
(1)	(2)	(3)	(4)	(5)	(6)	
ITEM	SMR	FSCM	PART	DESCRIPTION AND USABLE ON CODES(UOC)	QTY	
NO	CODE		NUMBER			
GROUP 03. PANEL ASSEMBLY						
FIGURE 3. PANEL ASSY						
1	XDFDD	77272	145G5210-1	PANEL ASSY TEST SET..		
2	PAFZZ	80205	NAS1635-04-8	.SCREW,MACHINE		1
3	PAFZZ	96906	MS35333-70	.WASHER,LOCK		11
4	PAFZZ	96906	MS21044C04	.NUT,SELF-LOCKING,HE		22
5	PAFZZ	96906	MS3470L24-61P	.CONNECTOR,RECEPTACL (J1)		1
6	PAFZZ	96906	MS3470L24-61PX	.CONNECTOR,RECEPTACL (J3).		1
7	PAOZZ	96906	MS91528-1K2B	.KNOB		14
8	PAOZZ	96906	MS91528-2K2B	.KNOB		3
9	PAFZZ	80205	NAS1635-04-6P	.SCREW,MACHINE		2
10	PAFZZ	96906	MS77068-2	.TERMINAL ,LUG		1
11	PAFZZ	96906	MS51957-9	.SCREW,MACHINE		3
12	XDFZZ	77272	414G5207-1	.COVER METER		1
13	PBDZZ	94580	10072877-101	.METER,NULL		1
14	PAFZZ	96906	MS24693S272	.SCREW,MACHINE (M2)		8
15	XDOZZ	94580	459066-8	.HANDLE		4
16	PAFZZ	80205	NAS1635-08-6	.SCREW,MACHINE		17
17	XDFZZ	77272	414G5222-1	.PLATE BOTTOM		1
18	PAFZZ	80205	NAS1635-3-8	.SCREW,MACHINE		20
19	PAFZZ	96906	MS35333-73	.WASHER,LOCK		20
20	PBDZZ	94580	10039726-102	.POWER SUPPLY (PSI THRU PS4)		4
21	PAFZZ	80205	NAS1635-06-6	.SCREW,MACHINE		18
22	XDFZZ	77272	414G5217-1	.RETAINER CARD ASSY		1
23	XDFZZ	77272	414G5217-2	..CHANNEL		1
24	MFFZZ	77272	414G5217-3	..RUBBER CUSHION M/F RUBBER .25 AMS3195		1
25	PBDDD	77272	414G5240-1	.CIRCUIT CARD ASSY CIRCUIT (A2)		1
26	PBDDD	77272	414G5243-1	.CIRCUIT CARD ASSEMB CIRCUIT (A3)		1
27	PAFZZ	80205	NAS1635-02-7	.SCREW,MACHINE		4
28	XDFZZ	94580	422294-4	.NUT,SELF-LOCKING,HE		4
29	PADZZ	81349	M55302/27-06	.CONNECTOR,RECEPTACL (PR,P3)		2
30	XDFZZ	77272	234G5219-1	.BASE CARD CAGE ASSY		1
31	XDFZZ	94580	437104-4	..RIVET		12
32	XAFZZ	94580	1997949-9	..HOLDER PC BOARD		6
33	PAFZZ	81349	M45938/3-6CL	..NUT,SELF-LOCKING,CL		3
34	XAFZZ	77272	234G5219-2	..BASE CARD CAGE		1
35	PAFZZ	80205	NAS1635-06-7P	.SCREW,MACHINE		2
36	PAFZZ	96906	MS35333-71	.WASHER,LOCK		16
37	XDFZZ	77272	414G5218-1	.TOP CARD CAGE ASSY		1
38	PAFZZ	81349	M45938/3-6CL	..NUT,SELF-LOCKING,CL		9
39	XDFZZ	77272	414G5218-2	..TOP CARD CAGE		1
40	PBDZZ	94580	10039726-104	.POWER SUPPLY (PS5)		1
41	PAFZZ	80205	NAS1635-04-6	.SCREW,MACHINE		4
42	PBDZZ	94580	10070110-101	.TRANSFORMER POWER (T1)		1
43	PAFZZ	80205	NAS1635-04-18	.SCREW,MACHINE		2
44	PADZZ	94580	10039725-102	.TRANSFORMER,POWER (T2)		1
45	PAFZZ	96906	MS3470W16-26P	.CONNECTOR,RECEPTACL E (J4)		1
46	PAFZZ	96906	MS3476116-26S	.CONNECTOR,PLUG,ELEC TRICAL (P4)		4
47	PADZZ	81349	M15733/26-0007	.FILTER, RADIO INTR (FL1 THRU FL4)		4

SECTION II			TM55-4920-429-23P			
(1)	(2)	(3)	(4)	(5)	(6)	
ITEM NO	SMR CODE	FSCM	PART NUMBER	DESCRIPTION AND USABLE ON CODES(UOC)	QTY	
48	PAFZZ	96906	MS21044C06	.NUT, SELF-LOCKING,HE X	8	
49	PADZZ	81349	M5757/23-001	.RELAY,ELECTROMAGNET (K,K2)	2	
50	PBDDD	77272	414G5221-1	.TERMINAL BOARD ASSE (TB1)	1	
51	PADZZ	81349	RLR07C3921FR	..RESISTOR,FIXED,FILM (R3)	1	
52	PADZZ	81349	M39014/01-1593	..CAPACITOR,FIXED,CER (C1)	7	
53	XADZZ	77272	414G5221-2	..TERMINAL BOARD		
54	PBDDD	77272	414G5205-1	.TERMINAL BOARD ASSY	1	
55	PAOZZ	81349	RCR07G100JS	..RESISTOR,FIXED,COMP	1	
56	PADZZ	81349	RNC55H1052FS	..RESISTOR,FIXED,FILM (R4)	1	
57	PADZZ	81349	RNC55H7501FS	..RESISTOR,FIXED,FILM (R2)	1	
58	PADZZ	81349	RNC55H1002BS	..RESISTOR,FIXED,FILM (R1)		
59	XADZZ	77272	414G5205-2	..TERMINAL BOARD	1	
60	XDFZZ	77272	234G5215-1	.BRACKET ASSY RELAY	1	
61	PAFZZ	81349	M45938/3-8CL	..NUT,SELF-LOCKING,CL	4	
62	XDFZZ	77272	234G5215-2	..BRACKET RELAY	1	
63	XDFZZ	77272	414G5214-1	.BRACKET ASSY END	1	
64	PAFZZ	81349	M45938/3-8CL	..NUT,SELF-LOCKING,CL	6	
65	XDFZZ	77272	414G5214-2	. . BRACKET-END	1	
66	XDFZZ	77272	234G5216-1	.SUPT ASSY PWR SUPPLY	1	
67	PAFZZ	81349	M45938/3-8CL	..NUT,SELF-LOCKING,CL	8	
68	XDFZZ	77272	234G5216-2	. . SUPPORT	1	
69	XDFZZ	77272	234G5223-1	.CHASSIS SUPPORT ASY	1	
70	PAFZZ	81349	M45938/3-8CL	..NUT,SELF-LOCKING,CL	10	
71	XDFZZ	77272	234G5223-2	..CHASSIS SUPPORT	1	
72	XDFZZ	94580	440688-6	.LIGHT ASSY PILOT (DS2 THRU DS6)	5	
73	PAOZZ	81348	W-L-00111/7	.LAMP,INCANDESCENT	7	
74	XDOZZ	81349	LH90/1	.HOUSING IND LIGHT (DS1)	1	
75	PAOZZ	96906	MS18237-1WT	.LAMP,CARTRIDGE		
76	PAFZZ	96906	MS25244-7 1/2	.CIRCUIT BREAKER (CB3)		
77	PAFZZ	96906	MS25244-5	.CIRCUIT BREAKER (CB1,CB2)	2	
78	PAFZZ	96906	MS17322-10	.METER,TIME TOTALIZI (M1) (ALT FOR MS17322-6)	1	
79	PAFZZ	96906	MS24524-22	.SWITCH,TOGGLE (S1,S7,AND S9)	2	
80	PAFZZ	96906	MS24523-22	.SWITCH,TOGGLE (S2,S6)	3	
81	PAFZA	96906	MS35059-23	.SWITCH,TOGGLE (S8)	1	
82	PAFZZ	94580	441837-1	.POST,BINDING,ELECTR (TP2)	1	
83	PAFZZ	94580	441837-2	.POST-BINDING RED (TP1)	1	
84	XDFZZ	94580	440688-9	LIGHT ASSY PILOT (DS7)	1	
85	XDFZZ	94580	440688-4	.LIGHT ASSY PILOT (DS8)	1	
86	PAFZZ	96906	MS5068-21	.SWITCH,TOGGLE (S22)	1	
87	PAFZZ	96906	MS24523-27	.SWITCH,TOGGLE (S3,S4,AND S5)	3	
88	PAFZZ	81349	M3786/4-5096	.SWITCH,ROTARY (S18)	1	
89	PAFZZ	81349	M3786/4-5018	.SWITCH,ROTARY (S11,S13,S15,AND S16)	4	
90	PAFZZ	81349	MS786/36-0530	.SWITCH,ROTARY (S19 THRU S21)	3	
91	PAFZZ	81349	M3786/36-0229	.SWITCH,ROTARY (S17)	1	
92	PAFZZ	81349	M3786/4-5081	.SWITCH,ROTARY (S14)	1	
93	PAFZZ	81349	M3786/4-5019	.SWITCH,ROTARY (S12)	1	
94	PAFZZ	81349	M3786/4-5053	.SWITCH,ROTARY (S23,S24)	2	
95	PAFZZ	96906	MS90310-231	.SWITCH,TOGGLE (S10,S30,AND S31)	2	
96	PAFZZ	81349	MS786/36-0241	.SWITCH,ROTARY (S26,S28)	2	
97	PAFZZ	81349	M3786/4-5033	.SWITCH,ROTARY (S27,S29)	2	

SECTION II			TM55-4920-429-23P			
(1)	(2)	(3)	(4)	(5)	(6)	
ITEM			PART			
NO	CODE	FSCM	NUMBER	DESCRIPTION AND USABLE ON CODES(UOC)	QTY	
98	PAFZZ	80205	NAS1635-04-14P	.SCREW,MACHINE		4
99	PAFZZ	80205	NAS43DD0-30	.SPACER,SLEEVE		2
100	PAFZZ	80203	NAS43DD0-28	.SPACER,SLEEVE		2
101	PADZZ	81349	M24308/2-4	.CONNECTOR,RECEPTACL (P1)		1
102	PAFZZ	81349	M24308/25-6	..JACKSCREW,ELECTRICA		1
103	PADZZ	77272	414G5224-1	.FILTER-DISPLAY		1
104	PBDDD	77272	414G5237-1	.CIRCUIT CARD ASSY (A1)		1
105	PAOZZ	80205	NAS1635-06-7P	.SCREW,MACHINE		1
106	PAFZZ	80205	NAS1786-06-36	.POST ELECTRICAL		2
107	PADZZ	96906	MS51957-43	.SCREW,MACHINE		11
108	XCFZZ	77272	149G5289-1	.PLATE,NAME		1
109	XDFZZ	77272	414G522-1	.PANEL TEST SET		1
110	PAFZZ	94580	10073031-114	.POST,ELECTRICAL-REC		8

END OF FIGURE

SECTION II			TM55-4920-429-23P			
(1)	(2)	(3)	(4)	(5)	(6)	
ITEM NO	SMR CODE	FSCM	PART NUMBER	DESCRIPTION AND USABLE ON CODES(UOC)	QTY	
GROUP 04. BULK MATERIALS						
1	PABZZ	81343	AMS3195-250	RUBBER SHEET,CELLUL		V
2	XDDZZ	77272	AMS4182-4	GASKET MATERIAL		V
3	PADZZ	94580	MC8356-01	SILVER PASTE		V
4	PADZZ	97403	RTV732-50ZTUBECL	ADHESIVE		V
5	PADZZ	07187	P4002538	INSULATING VARNISH		v
6	PADZZ	90484	WTE734ACW92	WIRE,ELECTRICAL		V
7	PADZZ	90484	WTE734ACW92	WIRE,ELECTRICAL		V
8	PADZZ	90484	WTE734ACW92	WIRE,ELECTRICAL		V
9	PADZZ	81348	SN63WRAP3 0.015 1LB	SOLDER, TIN ALLOY		V
10	PADZZ	04773	W3013-24	WIRE, ELECTRICAL		V

END OF FIGURE

BULK-1

SECTION III. SPECIAL TOOLS LIST

(Not Applicable)

NATIONAL STOCK NUMBER AND PART NUMBER INDEX

NATIONAL STOCK NUMBER INDEX		NATIONAL STOCK NUMBER INDEX			
STOCK NUMBER	FIG.	ITEM	STOCK NUMBER	FIG.	ITEM
5935-00-009-2940	3	5	5305-00-940-9442	1	2
5910-00-010-8717	3	52	5305-00-957-7811	3	14
5305-00-054-5643	3	11	5935-00-976-5425	3	101
5305-00-054-6668	3	107	5945-00-981-1574	3	49
5365-00-057-9022	3	99	5310-00-982-4999	3	4
6145-00-060-9505	BULK	6	5310-00-982-6813	3	48
	BULK	7	5305-01-015-0994	3	16
	BULK	8	5905-01-016-1055	3	51
5905-00-107-0656	3	55	5930-01-021-1564	3	92
5905-00-112-0984	3	57	5305-01-030-2255	1	8
5985-00-137-4815	3	56	5915-01-032-4472	3	47
5985-00-139-2355	3	58	5310-01-049-0024	3	33
5930-00-153-8306	3	97		3	38
5935-00-172-1008	3	46	5930-01-055-3965	3	96
5305-00-197-8987	3	2	5930-01-055-3966	3	89
5305-00-203-1253	3	43	5935-01-057-0448	2	3
5305-00-218-5448	3	9	5310-01-057-9349	3	61
6145-00-236-9503	BULK	10		3	64
5950-00-253-5088	3	44		3	67
6645-00-255-1371	3	78		3	70
5935-00-407-5462	2	2	5305-01-076-3159	3	27
5930-00-432-7018	3	94	5930-01-085-9091	3	91
5935-00-436-0838	3	6	5935-01-093-5354	3	102
5970-00-442-0272	BULK	5	5935-01-108-7605	3	45
5305-00-458-2832	3	21	5935-01-118-9182	2	3
5305-00-480-8898	3	18	6625-01-141-8795	3	40
5305-00-498-1261	3	41	5999-01-141-8834	3	26
5310-00-543-5933	3	19	5940-01-142-0152	3	54
5310-00-550-3715	3	3	5999-01-142-0993	3	104
5355-00-556-0145	3	7	5999-01-142-0994	3	25
5355-00-559-8943	3	8	5940-01-144-3689	3	83
5930-00-615-7883	3	86	5305-01-144-4758	3	98
5310-00-616-3555	3	36	6130-01-144-5904	3	20
5935-00-628-9294	3	29	5915-01-144-7465	3	103
5930-00-655-1582	3	81	6625-01-144-7623	3	13
5930-00-655-4247	3	79	5940-01-144-8048	3	82
5930-00-683-1628	3	80	5935-01-144-9142	2	2
5930-00-683-1633	3	87	5935-01-144-9155	2	3
5365-00-684-5983	3	100	5930-01-144-9173	3	88
5925-00-686-3297	3	77	5930-01-144-9174	3	90
5925-00-686-3298	3	76	5950-01-144-9177	3	42
6240-00-735-7599	3	75	5340-01-145-3260	3	106
5930-00-759-7697	3	93	5940-01-145-7106	3	50
6240-00-763-7744	3	73	5340-01-146-0928	3	110
5935-00-763-8931	2	2	8040-01-148-2433	BULK	3
3439-00-770-4233	BULK	9	5935-01-163-3224	2	4
5940-00-827-2653	3	10	5935-01-174-3669	2	4
5305-00-839-9160	3	35			
	3	105			
5930-00-914-6458	3	95			

SECTION IV

TM55-4920-429-23P C01

NATIONAL STOCK NUMBER AND PART NUMBER INDEX

FSCM	PART NUMBER	PART NUMBER INDEX		FIG.	ITEM
			STOCK NUMBER		
81343	AMS3195-250			BULK	1
77272	AMS4182-4			BULK	2
81349	LH90/1			3	74
94580	MC8356-01	8040-01-148-2433		BULK	3
96906	MS17322-10	6645-00-255-1371		3	78
96906	MS18237-1WT	6240-00-735-7599		3	75
96906	MS21044C04	5310-00-982-4999		3	4
96906	MS21044C06	5310-00-982-6813		3	48
96906	MS24523-22	5930-00-683-1628		3	80
96906	MS24523-27	5930-00-683-1633		3	87
96906	MS2452622	5930-00-655-4247		3	79
96906	MS24693S272	5305-00-957-7811		3	14
96906	MS25068-21	5930-00-615-7883		3	86
96906	MS25244-5	5925-00-686-3297		3	77
96906	MS25244-7 1/2	5925-00-686-3298		3	76
96906	MS3470L24-61P	5935-00-009-2940		3	5
96906	MS3470L24-61PX	5935-00-436-0838		3	6
96906	MS3470W16-26P	5935-01-108-7605		3	45
96906	MS3471L24-61P	5935-01-057-0448		2	3
96906	MS3471L24-61PX	5935-01-144-9155		2	3
96906	MS3476L16-26S	5935-00-172-1008		3	46
96906	MS3476L24-61S	5935-00-407-5462		2	2
96906	MS3476L24-61SX	5935-00-763-8931		2	2
96906	M335059-23	5930-00-655-1582		3	81
96906	MS35333-70	5310-00-550-3715		3	3
96906	MS35333-71	5310-00-616-3555		3	36
96906	MS35333-73	5310-00-543-5933		3	19
96906	MSS1957-43	5305-00-054-6668		3	107
96906	MS51957-9	5305-00-054-5643		3	11
96906	MS77068-2	5940-00-827-2653		3	10
96906	MS90310-231	5930-00-914-6458		3	95
96906	MS91528-1K2B	5355-00-556-0145		3	7
96906	MS91528-2K2B	5355-00-559-8943		3	8
81349	M15733/26-0007	5915-01-032-4472		3	47
81349	M24308/2-4	5935-00-976-5425		3	101
81349	M24308/25-6	5935-01-093-53S4		3	102
81349	M3786/36-0229	5930-01-085-9091		3	91
81349	M3786/36-0241	5930-01-055-3965		3	96
81349	M3786/36-0530	5930-01-144-9174		3	90
81349	M3786/4-5018	5930-01-055-3966		3	89
81349	M3786/4-5019	5930-00-759-7697		3	93
81349	M3786/4-5033	5930-00-153-8306		3	97
81349	M3786/4-5053	5930-00-432-7018		3	94
81349	M3786/4-5081	5930-01-021-1564		3	92
81349	M3786/4-5096	5930-01-144-9173		3	88
81349	M39014/01-1593	5910-00-010-8717		3	52
81349	M45938/3-6CL	5310-01-049-0024		3	33
				3	38
81349	M45938/3-8CL	5310-01-057-9349		3	61
				3	64
				3	67

NATIONAL STOCK NUMBER AND PART NUMBER INDEX

FSCM	PART NUMBER	PART NUMBER INDEX		FIG.	ITEM
			STOCK NUMBER		
81349	M45938/3-8CL		5310-01-057-9349	3	70
81349	M55302/27-06		5935-00-628-9294	3	29
81349	M5757/23-001		5945-00-981-1574	3	49
81349	M83723/85A1415N		5935-01-118-9182	2	3
81349	M83723/86A1415N		5935-01-144-9142	2	2
81349	M85049/52-1-14W		5935-01-163-3224	2	4
81349	M85049/52-1-24W		5935-01-174-3669	2	4
80205	NAS1635-00-2		5305-00-940-9442	1	2
80205	NAS1635-02-7		5305-01-076-3159	3	27
80205	NAS1635-04-14P		5305-01-144-4758	3	98
80205	NAS1635-04-18		5305-00-203-1253	3	43
80205	NAS1635-04-6		5305-00-498-1261	3	41
80205	NAS1635-04-6P		5305-00-218-5448	3	9
80205	NAS1635-04-8		5305-00-197-8987	3	2
80205	NAS1635-06-6		5305-00-458-2832	3	21
80205	NAS1635-067P		5305-00-839-9160	3	35
				3	105
80205	NAS1635-08-6		5305-01-015-0994	3	16
80205	NAS1635-3-10		5305-01-030-2255	1	8
80205	NAS1635-3-8		5305-00-480-8898	3	18
80205	NAS1786-06-36		5340-01-145-3260	3	106
80205	NAS43DD0-28		5345-00-684-5983	3	100
80205	NAS43DD0-30		5365-00-057-9022	3	99
07187	P4002538		5970-00-442-0272	BULK	5
81349	RCR076100JS		5903-00-107-0656	3	55
81349	RLR07C3921FR		5905-01-016-1055	3	51
81349	RNC55H1002BS		5905-00-139-2355	3	58
81349	RNC55H1052FS		5905-00-137-4815	3	56
81349	RNC55H7501FS		5905-00-112-0984	3	57
97403	RTV732-50ZTUBECL			BULK	4
81348	SN63WRAP3 0.015 1LB		3439-00-770-4233	BULK	9
77272	VS25113-4			1	3
81348	W-L-00111/7		6240-00-763-7744	3	73
90484	WTE734ACW92		6143-00-060-9505	BULK	6
				BULK	7
				BULK	8
04773	W3013-24		6145-00-236-9503	BULK	10
94580	10039725-102		5950-00-253-5088	3	44
94580	10039726-102		6130-01-144-5904	3	20
94580	10039726-104		6625-01-141-8795	3	40
94580	10066999-101			1	4
94580	10070110-101		5950-01-144-9177	3	42
94580	10072877-101		6625-01-144-7623	3	13
94580	10073031-114		5340-01-146-0928	3	110
77272	14565202-1			2	5
77272	145G5202-2			2	6
77272	145G5202-3			2	7
77272	145G5202-4			2	5
77272	145G5202-5			2	6
77272	145G5202-6			2	7

NATIONAL STOCK NUMBER AND PART NUMBER INDEX

FSCM	PART NUMBER	PART NUMBER INDEX		FIG.	ITEM
			STOCK NUMBER		
77272	145G5202-7			2	5
77272	145G5202-8			2	6
77272	14SG5202-9			2	7
77272	145G5210-1			1	9
				3	1
77272	145G5211-1			1	5
				2	1
77272	145G5212-1			1	6
				2	1
77272	145G5213-1			1	7
				2	1
77272	145G5289-1			3	108
94580	1997949-9			3	32
77272	234G5213-1			3	60
77272	234G5215-2			3	62
77272	234G5216-1			3	66
77272	234G5216-2			3	68
77272	234G5219-1			3	30
77272	234G5219-2			3	34
77272	234G5223-1			3	69
77272	234G5223-2			3	71
77272	414G5205-1	5940-01-142-0152		3	54
77272	414G5205-2			3	59
77272	414G5206-1			1	10
77272	414G5207-1			3	12
77272	414G5214-1			3	63
77272	414G5214-2			3	65
77272	414G5217-1			3	22
77272	414G5217-2			3	23
77272	414G5217-3			3	24
77272	414G5218-1			3	37
77272	414G5218-2			3	39
77272	414G5221-1	5940-01-145-7106		3	50
77272	414G5221-2			3	53
77272	414G5222-1			3	17
77272	414G5224-1	5915-01-144-7465		3	103
77272	414G5225-1			3	109
77272	414G5237-1	5999-01-142-0993		3	104
77272	414G5240-1	5999-01-142-0994		3	25
77272	414G5243-1	5999-01-141-8834		3	26
94580	422294-4			3	28
94580	437104-4			3	31
94580	440688-4			3	85
94580	440688-6			3	72
94580	440688-9			3	84
94580	441837-1	5940-01-144-8048		3	82
94580	441837-2	5940-01-144-3689		3	83
94580	459066-8			3	15

By Order of the Secretary of the Army:

Official:

JOHN A. WICKHAM, JR.
General, United States Army
Chief of Staff

R. L. DILWORTH
Brigadier General, United States Army
The Adjutant General

DI STRI BUTI ON:

To be di stributed i n accordance wi th DA Form 12-31, AVUM and AVIM Mai ntenance requirements for CH-47D Helicopter, Cargo Transport.



SOMETHING WRONG WITH THIS PUBLICATION?

THEN... JOT DOWN THE DOPE ABOUT IT ON THIS FORM. CAREFULLY TEAR IT OUT. FOLD IT AND DROP IT IN THE MAIL!

FROM: (PRINT YOUR UNIT'S COMPLETE ADDRESS)
PFC JOHN DOE
COA, 3d ENGINEER BN
FT. LEONARD WOOD, MO 63108
 DATE SENT

PUBLICATION NUMBER: **TM 55-4920-429-23P**
 PUBLICATION DATE: **3 JUN 1987**
 PUBLICATION TITLE: **RPSTL-Advanced Flight Control System (AFCS) Line Test Set NSN 4920-01-121-0602**

BE EXACT... PIN-POINT WHERE IT IS				IN THIS SPACE TELL WHAT IS WRONG AND WHAT SHOULD BE DONE ABOUT IT:
PAGE NO	PARA-GRAPH	FIGURE NO	TABLE NO	
6	2-1 a			<i>In line 6 of paragraph 2-1a the manual states the engine has <u>6</u> cylinders. The engine on my set only has <u>4</u> cylinders. Change the manual to show <u>4</u> cylinders.</i>
B1		4-3		<i>Callout 16 on figure 4-3 is pointing at a <u>bolt</u>. In key to figure 4-3, item 16 is called a <u>shim</u>. Please correct one or the other.</i>
125	line 20			<i>I ordered a gasket, item 19 on figure B-16 by NSN 2 910-05-762-3001. I got a gasket but it doesn't fit. Supply says I got what I ordered, so the NSN is wrong. Please give me a <u>good NSN</u>.</i>

PRINTED NAME, GRADE OR TITLE, AND TELEPHONE NUMBER
JOHN DOE, PFC (268) 317-7111

SIGN HERE *John DOE*
JOHN DOE

REFORMATTED LINE
TEAR

RECOMMENDED CHANGES TO EQUIPMENT TECHNICAL PUBLICATIONS

SOMETHING WRONG WITH THIS PUBLICATION?



THEN... JOT DOWN THE DOPE ABOUT IT ON THIS FORM. CAREFULLY TEAR IT OUT, FOLD IT AND DROP IT IN THE MAIL!

FROM: (PRINT YOUR UNIT'S COMPLETE ADDRESS)

DATE SENT

PUBLICATION NUMBER
TM 55-4920-429-23P

PUBLICATION DATE
3 JUN 1987

PUBLICATION TITLE RPSTL-Advanced Flight Control System (AFCS) Line Test Set NSN 4920-01-121-0602

BE EXACT... PIN-POINT WHERE IT IS

PAGE NO	PARA-GRAPH	FIGURE NO	TABLE NO

IN THIS SPACE TELL WHAT IS WRONG AND WHAT SHOULD BE DONE ABOUT IT:

PRINTED NAME, GRADE OR TITLE, AND TELEPHONE NUMBER

SIGN HERE

TEAR ALONG PERFORATED LINE

DA FORM 1 JUL 79 2028-2

PREVIOUS EDITIONS ARE OBSOLETE. DRSTS-M Overprint 2, 1 Nov 80.

P.S.--IF YOUR OUTFIT WANTS TO KNOW ABOUT YOUR RECOMMENDATION MAKE A CARBON COPY OF THIS AND GIVE IT TO YOUR HEADQUARTERS.

FILL IN YOUR
UNIT'S ADDRESS



FOLD BACK

TEAR ALONG

ATED LINE

COMMANDER
U S ARMY AVIATION SYSTEMS COMMAND
ATTN: AMSAV-MPSD
4300 GOODFELLOW BOULEVARD
ST. LOUIS, MO 63120-1798

The Metric System and Equivalents

Linear Measure

centimeter = 10 millimeters = .39 inch
 decimeter = 10 centimeters = 3.94 inches
 1 meter = 10 decimeters = 39.37 inches
 1 dekameter = 10 meters = 32.8 feet
 1 hectometer = 10 dekameters = 328.08 feet
 1 kilometer = 10 hectometers = 3,280.8 feet

Weights

1 centigram = 10 milligrams = .15 grain
 1 decigram = 10 centigrams = 1.54 grains
 1 gram = 10 decigram = .035 ounce
 1 dekagram = 10 grams = .35 ounce
 1 hectogram = 10 dekagrams = 3.52 ounces
 1 kilogram = 10 hectograms = 2.2 pounds
 1 quintal = 100 kilograms = 220.46 pounds
 1 metric ton = 10 quintals = 1.1 short tons

Liquid Measure

1 centiliter = 10 milliliters = .34 fl. ounce
 1 deciliter = 10 centiliters = 3.38 fl. ounces
 1 liter = 10 deciliters = 33.81 fl. ounces
 1 dekaliter = 10 liters = 2.64 gallons
 1 hectoliter = 10 dekaliters = 26.42 gallons
 1 kiloliter = 10 hectoliters = 264.18 gallons

Square Measure

1 sq. centimeter = 100 sq. millimeters = .155 sq. inch
 1 sq. decimeter = 100 sq. centimeters = 15.5 sq. inches
 1 sq. meter (centare) = 100 sq. decimeters = 10.76 sq. feet
 1 sq. dekameter (are) = 100 sq. meters = 1,076.4 sq. feet
 1 sq. hectometer (hectare) = 100 sq. dekameters = 2.47 acres
 1 sq. kilometer = 100 sq. hectometers = .386 sq. mile

Cubic Measure

1 cu. centimeter = 1000 cu. millimeters = .06 cu. inch
 1 cu. decimeter = 1000 cu. centimeters = 61.02 cu. inches
 1 cu. meter = 1000 cu. decimeters = 35.31 cu. feet

Approximate Conversion Factors

To change	To	Multiply by	To change	To	Multiply by
inches	centimeters	2.540	ounce-inches	newton-meters	.007062
feet	meters	.305	centimeters	inches	.394
yards	meters	.914	meters	feet	3.280
miles	kilometers	1.609	meters	yards	1.094
square inches	square centimeters	6.451	kilometers	miles	.621
square feet	square meters	.093	square centimeters	square inches	.155
square yards	square meters	.836	square meters	square feet	10.764
square miles	square kilometers	2.590	square meters	square yards	1.196
acres	square hectometers	.405	square kilometers	square miles	.386
cubic feet	cubic meters	.028	square hectometers	acres	2.471
cubic yards	cubic meters	.765	cubic meters	cubic feet	35.315
fluid ounces	milliliters	29.573	cubic meters	cubic yards	1.308
pints	liters	.473	milliliters	fluid ounces	.034
quarts	liters	.946	liters	pints	2.113
gallons	liters	3.785	liters	quarts	1.057
ounces	grams	28.349	liters	gallons	.264
pounds	kilograms	.454	grams	ounces	.035
short tons	metric tons	.907	kilograms	pounds	2.205
pound-feet	newton-meters	1.356	metric tons	short tons	1.102
pound-inches	newton-meters	.11296			

Temperature (Exact)

°F	Fahrenheit temperature	5/9 (after subtracting 32)	Celsius temperature	°C
----	------------------------	----------------------------	---------------------	----

PIN: 054671-000